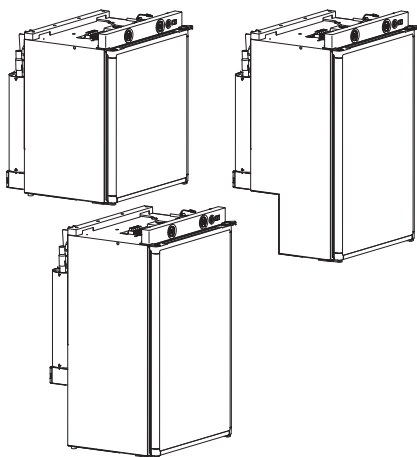


# ↗ DOMETIC REFRIGERATION 5 SERIES



RM5310, RM5330, RM5380

EN

## Absorber refrigerator

Operating manual ..... 3

© 2021 Dometic Group. The visual appearance of the contents of this manual is protected by copyright and design law. The underlying technical design and the products contained herein may be protected by design, patent or be patent pending. The trademarks mentioned in this manual belong to Dometic Sweden AB. All rights are reserved.

Please read these instructions carefully and follow all instructions, guidelines, and warnings included in this product manual in order to ensure that you install, use, and maintain the product properly at all times. These instructions **MUST** stay with this product.

By using the product, you hereby confirm that you have read all instructions, guidelines, and warnings carefully and that you understand and agree to abide by the terms and conditions as set forth herein. You agree to use this product only for the intended purpose and application and in accordance with the instructions, guidelines, and warnings as set forth in this product manual as well as in accordance with all applicable laws and regulations. A failure to read and follow the instructions and warnings set forth herein may result in an injury to yourself and others, damage to your product or damage to other property in the vicinity. This product manual, including the instructions, guidelines, and warnings, and related documentation, may be subject to changes and updates. For up-to-date product information, please visit [dometic.com](http://dometic.com).

## Table of contents

1	Explanation of symbols . . . . .	3
2	Safety instructions . . . . .	4
3	Scope of delivery . . . . .	9
4	Accessories . . . . .	9
5	Intended use . . . . .	10
6	Technical description . . . . .	10
7	Operating the refrigerator . . . . .	13
8	Troubleshooting . . . . .	24
9	Cleaning and maintenance . . . . .	26
10	Maintenance . . . . .	26
11	Warranty . . . . .	27
12	Disposal . . . . .	28
13	Technical data . . . . .	29

## 1 Explanation of symbols



### **WARNING!**

**Safety instruction:** Indicates a hazardous situation that, if not avoided, could result in death or serious injury.



### **CAUTION!**

**Safety instruction:** Indicates a hazardous situation that, if not avoided, could result in minor or moderate injury.

**NOTICE!**

Indicates a situation that, if not avoided, can result in property damage.

**NOTE**

Supplementary information for operating the product.

## 2 Safety instructions

### 2.1 General safety



**WARNING! Failure to obey these warnings could result in death or serious injury.**

**Electrocution hazard**

- Installation and removal of the device may only be carried out by qualified personnel.
- Do not operate the device if it is visibly damaged.
- This device may only be repaired by qualified personnel. Improper repairs can result in considerable danger or damage to the device.
- If the power cable for this refrigerator is damaged, it must be replaced by the manufacturer, customer service or a similarly qualified person in order to prevent safety hazards.

**Fire hazard**

- The refrigerant in the refrigerant circuit is highly flammable. In the event of any damage to the refrigerant circuit (smell of ammonia):
  - Switch off the device.
  - Avoid naked flames and sparks.
  - Air the room well.

**Explosion hazard**

- DO NOT SPRAY AEROSOLS IN THE VICINITY OF THIS DEVICE WHILE IT IS IN OPERATION.
- Do not store any explosive substances, such as spray cans with propellants, in the device.

**Health hazard**

- This device can be used by children aged from 8 years and above and persons with reduced physical, sensory or mental capabilities or lack of experience and knowledge if they have been given supervision or instruction concerning use of the device in a safe way and understand the hazards involved.
- Children aged from 3 to 8 years are allowed to load and unload cooling devices.
- Cleaning and user maintenance may not be carried out by unsupervised children.
- Children must be supervised to ensure that they do not play with the device.

**Children beware**

- Make sure that the shelves are mounted and secured so that children cannot lock themselves in the device.
- Before disposing of your old refrigerator:
  - Dismantle the drawers.
  - Leave the shelves in the refrigerator so that children cannot climb inside.

**General hazard**

- DO NOT USE OR STORE FLAMMABLE MATERIALS IN OR NEAR THIS DEVICE.
- DO NOT PLACE ARTICLES ON OR AGAINST THIS DEVICE.
- DO NOT MODIFY THIS DEVICE.

**NOTICE! Damage hazard**

- Keep the condensation opening clean at all times.
- The device lighting may only be replaced by a qualified service agent.
- Do not use a high-pressure cleaner near the ventilation grill when cleaning the vehicle.
- Attach the winter covers of the ventilation grille (accessories) when the vehicle is cleaned from the outside or not used for a prolonged period of time.
- The device may not be exposed to rain.

## 2.2 Safety when operating with DC power



### **NOTICE! Damage hazard**

Only select operation with DC power supply (battery mode) if the vehicle engine is running and providing sufficient voltage to the light system, or if you are using a battery monitor.

## 2.3 Safety when operating with AC power



### **NOTICE! Damage hazard**

- Check that the voltage specification on the type plate is the same as that of the power supply.
- Only use the cable supplied to connect the refrigerator to the AC mains.
- Never pull the plug out of the socket by the connection cable.

## 2.4 Safety precautions when handling liquid gas



### **WARNING!**

- After use always disconnect the liquid gas cylinder.
- Store liquid gas cylinders away from heating or cooking devices and other light or heat sources in a well-ventilated area out of the reach of children.
- **Never** store liquid gas cylinders in unventilated areas or below ground level (funnel-shaped holes in the ground).
- **Never** store liquid gas cylinders in buildings such as garages.
- Any indoor storage must comply with national regulations.
- Do not store liquid gas cylinders on their side.
- Keep liquid gas cylinders away from direct sunlight. The temperature should not exceed 50 °C.

## 2.5 Safety when operating with gas



### **WARNING! Failure to obey these warnings could result in death or serious injury.**

#### **Explosion hazard**

- **Only** operate the device at the pressure shown on the type plate. Only use pressure controllers with a fixed setting which comply with the national regulations.

- Never operate the device with gas:
  - At petrol stations
  - In parking garages
  - On ferries
  - While driving
  - While transporting the caravan or mobile home with a transport vehicle or tow truck
- Never use a naked flame to check the device for leaks.
- In case of gas odor:
  - Close the gas supply cock and the valve on the cylinder.
  - Open all windows and leave the room.
  - Do not press an electric switch.
  - Put out any naked flames.
  - Have the gas system checked by a specialist.

**NOTICE! Damage hazard**

- Only use universal LPG gas.

**NOTE**

- Ignition problems may occur at altitudes above 1000 m. Switch to a different energy source.

## 2.6 Safety when operating

**CAUTION! Failure to obey these cautions could result in minor or moderate injury.****Health hazard**

- Make sure that you only put items in the device which may be chilled at the selected temperature.
- Opening the door for long periods can cause significant increase of the temperature in the compartments of the device.
- Food may only be stored in its original packaging or in suitable containers.
- Store raw meat and fish in suitable containers in the device, so that it is not in contact with and cannot drip onto other food.

- If the device is left empty for long periods:
  - Switch off the device.
  - Defrost the device.
  - Clean and dry the device.
  - Leave the door open to prevent mold developing within the device.

### **Risk of injury**

- Close and lock the device door before beginning a journey.
- Do not lean on the open device door.
- If the device has a double-sided door, the door can completely detach from the device if used incorrectly. Push the doors closed until you hear a clear click at the top and bottom.
- The cooling aggregate at the back of the device becomes very hot during operation. Protect yourself from coming into contact with hot parts when removing ventilation grills.



### **NOTICE! Damage hazard**

- Ensure that the ventilation openings are not covered.
- Only store heavy objects such as bottles or cans in the device door, in the vegetable compartment or on the bottom shelf.
- Do not use electrical devices inside the device unless they are recommended by the manufacturer for that purpose.
- If the device has a double-sided door and the door is not locked correctly on the opposite side, push on that side at the top and the bottom until it locks in place.



### **NOTE**

- Ask your vehicle manufacturer if the battery management of your vehicle shuts down the devices to protect the battery.
- Put the device door and the freezer door into the winter position if you are not going to use the device for a longer period of time. This prevents mold from forming.
- For ambient temperatures of +15 °C to +25 °C, select the MID temperature setting.



- To avoid food waste, note the following:
  - Keep temperature fluctuation as low as possible. Only open the freezer as often and for as long as necessary. Store the foodstuff in such a way that the air can still circulate well.
  - If the temperature can be adjusted: Adjust the temperature to the quantity and type of the foodstuff.
  - Foodstuff can easily absorb or release odor or taste. Always store foodstuff covered or in closed containers/bottles.

### 3 Scope of delivery

- Refrigerator
- Ice cube tray
- Short operating manual
- Quick Start Guide

### 4 Accessories

Available as accessories (not included in the scope of delivery):

#### Description

Ventilation grille LS100  
with exhaust gas routing and winter cover

Ventilation grille LS200  
without exhaust gas routing, with winter cover

If you have questions regarding the accessories, please contact your local service partner.

## 5 Intended use

The refrigerator is designed for installation in caravans or motor homes. It is only suitable for cooling, freezing and storing foodstuffs. The refrigerator is not intended for the proper storage of medicine.

The refrigerator is designed to be operated on a DC power supply and an AC socket and can be independently powered by liquid gas (propane or butane). The refrigerator may **not** be run on natural gas or city gas. The RM5385 refrigerator also always requires a permanent DC supply.

This product is only suitable for the intended purpose and application in accordance with these instructions.

This manual provides information that is necessary for proper installation and/or operation of the product. Poor installation and/or improper operating or maintenance will result in unsatisfactory performance and a possible failure.

The manufacturer accepts no liability for any injury or damage to the product resulting from:

- Incorrect assembly or connection, including excess voltage
- Incorrect maintenance or use of spare parts other than original spare parts provided by the manufacturer
- Alterations to the product without express permission from the manufacturer
- Use for purposes other than those described in this manual

Dometic reserves the right to change product appearance and product specifications.

## 6 Technical description

### 6.1 Description

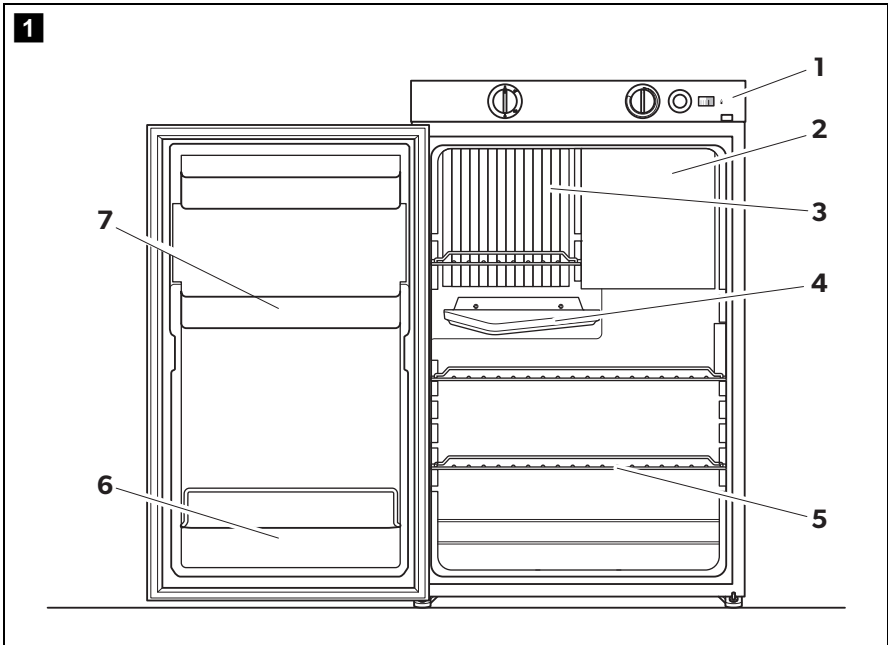
The refrigerator is an absorption refrigerator. The refrigerator is designed to operate with different types of power and can be run on an AC power supply, a DC power supply or with butane/propane gas. For DC operation, the vehicle battery can be used. For AC and gas operation, the thermostatic control ensures that the refrigerator temperature is kept constant and as little power as possible is consumed.

The refrigerator has a locking mechanism to protect it during transport.

The refrigerator has a defrost water drain. The drain opening is located on the rear panel of the refrigerator.

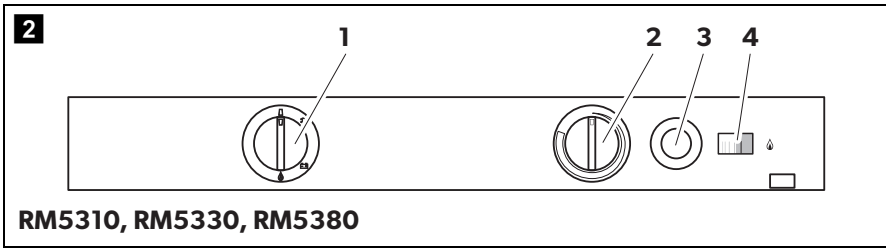
The refrigerator is equipped with an automatic pilot light which automatically interrupts the gas supply after approx. 30 seconds if the flame goes out.

## 6.2 Components



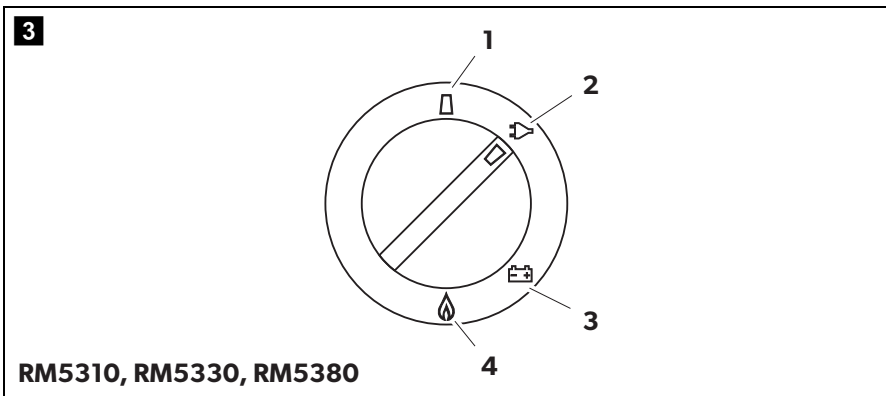
No. in fig. 1	Description
1	Control elements
2	Freezer compartment
3	Downstream evaporator for cooling chamber
4	Condensate draining channel
5	Shelves
6	Bottom section with bottle holder
7	Top section

### 6.3 Control elements







The RM5310, RM5330 and RM5380 refrigerators have the following control elements:

No. in fig. <b>2</b>	Description
1	Energy selection switch
2	Temperature controller
3	Battery ignition (gas)
4	Flame indicator



The power selector (fig. **2** 1, page 12) has the following setting options:

No. in fig. <b>3</b>	Description
1	 OFF
2	 Operating with AC power supply

No. in fig. <b>3</b>	Description
3	 Operating with DC power supply
4	 Gas operation

## 7 Operating the refrigerator



### NOTICE!

- Make sure that you only put items in the refrigerator which may be kept at the selected temperature.
- Food may only be stored in its original packaging or in suitable containers.



### NOTE

- Before using your new device for the first time, you should clean it inside and outside with a damp cloth for hygienic reasons.
- The cooling performance can be affected by:
  - The ambient temperature
  - The amount of food to be conserved
  - The frequency with which the door is opened
  - The outside temperature
  - The ventilation
- When the device is first used, an odour may develop that will dissipate after a few hours. Air the living area thoroughly.
- Park the vehicle in a horizontal position, particularly when starting up and filling the refrigerator before beginning a trip.
- The refrigerator cooling unit is noiseless.
- Around one hour after being switched on, the deep freeze compartment of the refrigerators should get cold. The refrigerator will reach its operating temperature after a few hours.

## 7.1 Saving energy

- Only open the refrigerator as often and for as long as necessary.
- Allow warm food to cool down first before placing it in the device to keep cool.
- Defrost your refrigerator as soon as a layer of ice forms.
- Avoid unnecessarily low temperature settings.
- For optimal energy consumption, position the shelves and drawers according to their position on delivery.
- On a regularly basis, make sure the door seal still fits properly.
- Clean dust and dirt from the condenser at regular intervals.

## 7.2 Switching on the refrigerator

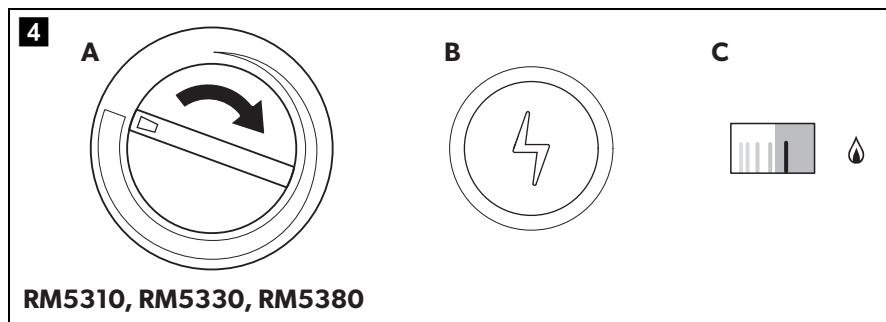
### Operating with AC power supply

- ▶ Switch the refrigerator on by turning the power selection button to the  position.

### Operating with DC power supply

- ▶ Switch the refrigerator on by turning the power selection button to the  position.

### Gas operation (fig. 4)




#### **WARNING! Fire hazard!**

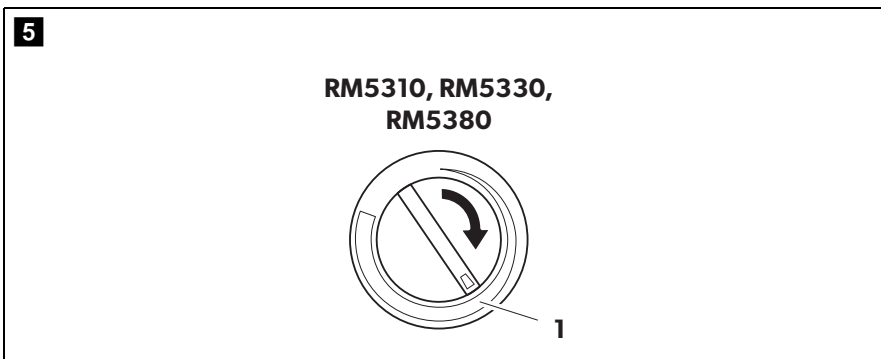
Never operate the refrigerator with gas at petrol stations.

**NOTE**

When operating with LPG, the burner must be cleaned frequently (two or three times a year).

1. Make sure that the gas supply is turned on.
  2. Turn the power selector switch to the  position.
  3. Turn the temperature control to the maximum level (**A**).
  4. Press in the temperature regulator and hold it down.
  5. Press in the battery igniter as well and hold it down (**B**).
- ✓ The burner is ignited automatically. The needle of the pilot light moves to the green zone once the burner has ignited (**C**).
6. Press and hold down the temperature regulator for another 15 seconds.

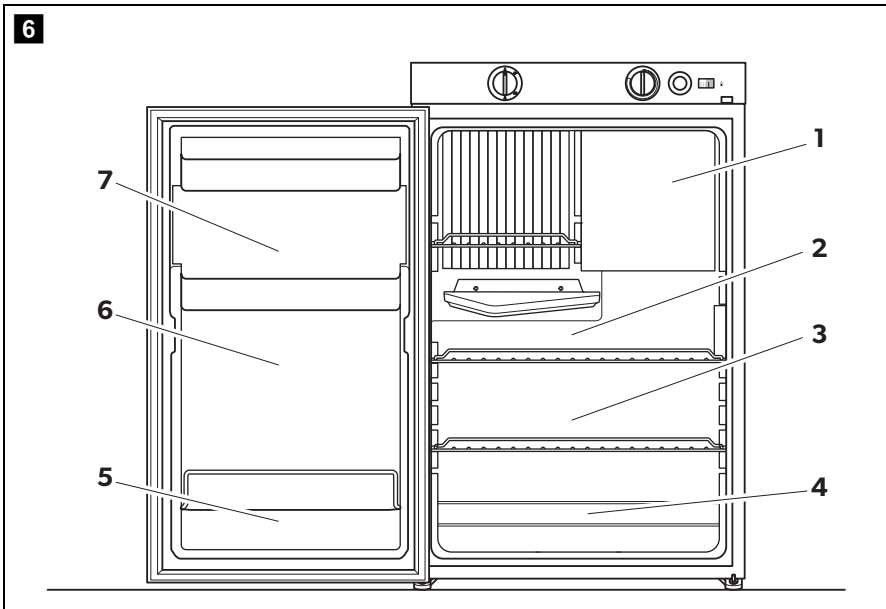
### 7.3 Selecting the temperature

**NOTE**

- For ambient temperatures of +15 °C – +25 °C, select the medium setting (fig. **5** 1). The cooling unit operates in the optimum power range.
- In DC power mode, the refrigerator works without thermostatic control (permanent operation).

- Set the required temperature using the temperature regulator (fig. **2** 2, page 12):
- Narrow bar = lowest cooling capacity
  - Wider bar = highest cooling capacity

## 7.4 Information on storing food



### CAUTION!

Only store heavy objects such as bottles or cans in the refrigerator door or on the bottom shelf.

The refrigerator shelves are recommended for the following foods:

No. in fig. 6	Food
1	Frozen foods
2	Store dairy products and pre-prepared meals in this compartment only.
3	Meat, fish, food to be defrosted
4	Lettuce, vegetables, fruit
5	Eggs, butter
6	Drinks in bottles or cartons
7	Dressings, ketchup, jams

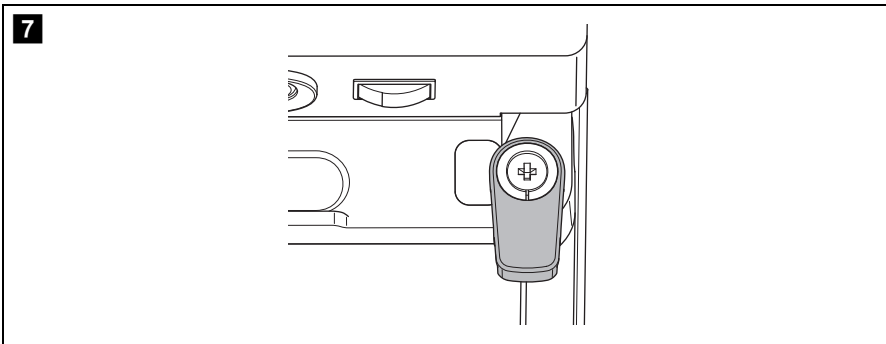


Please observe the following instructions relating to the storing of goods:

**NOTE**

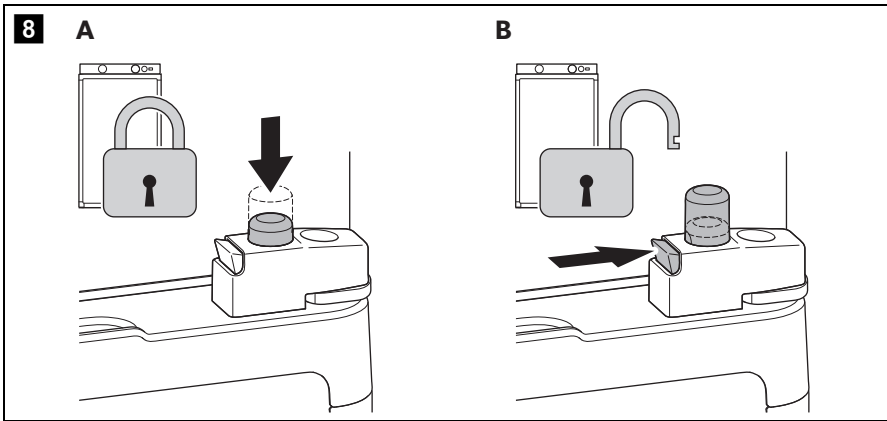
- Do not keep carbonated drinks in the freezer compartment.
- The freezer compartment is suitable for making ice cubes and for the short-term storage of frozen foods. It is not suitable for freezing foods.
- If the refrigerator is subjected to a room temperature below +10 °C for a longer period of time, even regulation of the freezer compartment temperature cannot be guaranteed. That may cause the temperature of the freezer compartment to increase and the stored goods to be defrosted.
- Pack raw and cooked goods separately.
- Observe the best before date on the packaging.
- Do not leave cooled goods outside the refrigerator for too long.
- Clean the interior of the refrigerator at regular intervals.

## 7.5 Setting the rotary door lock



- Turn the lock to the front to lock the refrigerator door while driving (fig. **7**).

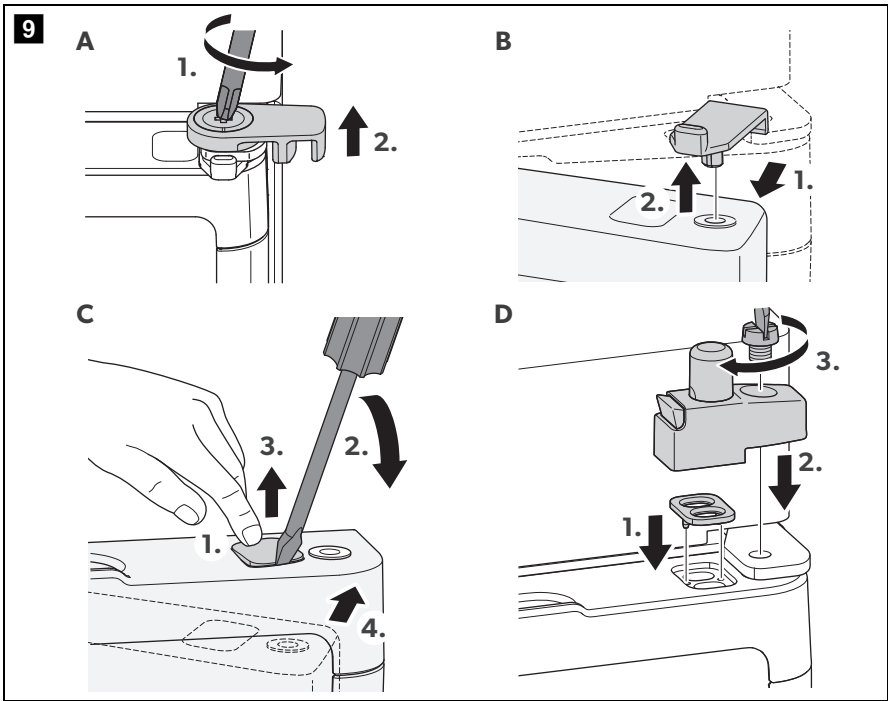
## 7.6 Setting the 2-button door lock



- Close the door.
- Press the button (fig. **8** A) to lock the door.
- Press the unlock button (fig. **8** B) to unlock the door.

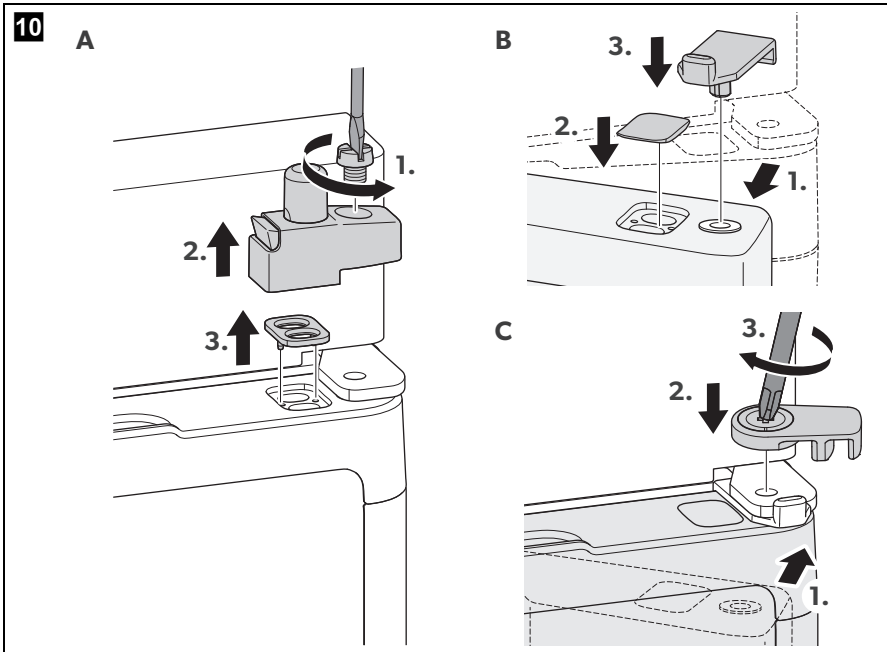
## 7.7 Changing the door lock

### Replacing the rotary door lock with the 2-button door lock



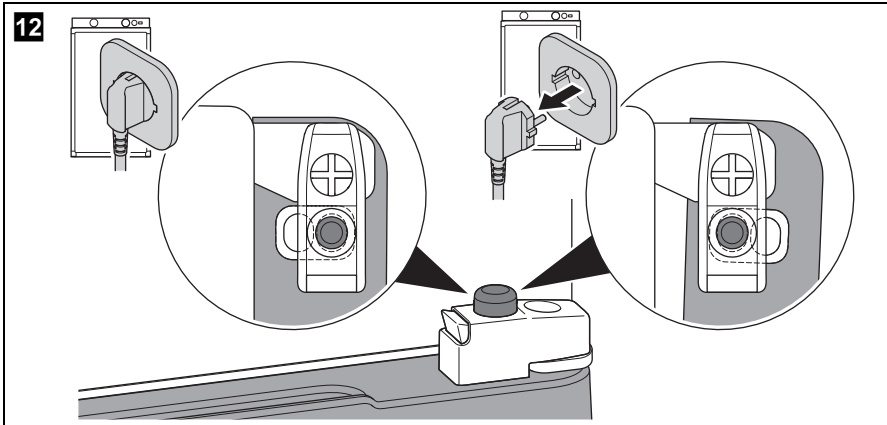
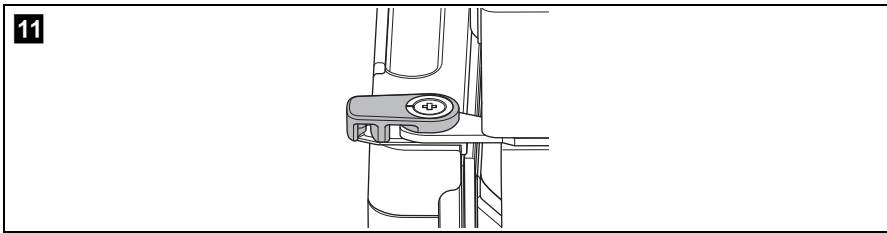
► Replace the door lock as shown (fig. **9**).

**Replacing the 2-button door lock with the rotary door lock**



► Replace the door lock as shown (fig. **10**).

## 7.8 Switching off the refrigerator




### NOTE

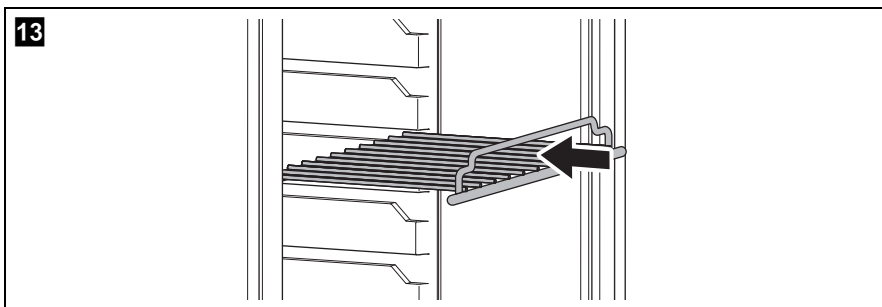
If you are not going to use the refrigerator for a prolonged period of time:

- **Rotary door lock:** Lock the door with the door lock so that the door is open a crack (fig. **11**).
- **2-button door lock:** Lock the door on the rear hole so that the door is open a crack (fig. **12**).

This prevents mold from forming.

1. Turn the power selector switch to the  position.
2. Close the gas supply in the vehicle and the valve on the gas cylinder.

## 7.9 Positioning the shelves



1. Lift the shelves and pull them out of the guide.
2. Place the shelves as desired (fig. **13**).

## 7.10 Defrosting the refrigerator



### NOTICE!

Do not use mechanical tools to remove ice or to free objects frozen onto the device.

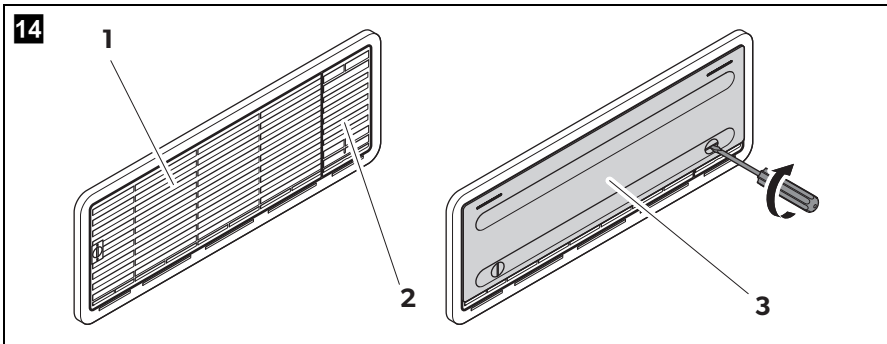


### NOTE

Over time, frost will develop on the cooling fins inside the refrigerator. Once the layer of frost is about 3 mm thick, you should defrost the refrigerator.

1. Switch off the refrigerator.
2. Empty the refrigerator.
3. Place a cloth in the freezer compartment and the cooling compartment to collect any excess water.
4. Leave the door open.
- ✓ The condensation from the main cooling compartment runs off into a container on the back of the device and evaporates there.
5. Wipe both cooling compartments dry with a cloth.

## 7.11 Operation at low outside temperatures



### NOTICE!

Do not attach the top winter covers (not in scope of delivery) while operating with gas. This prevents heat from building up and the fumes from the refrigerator can be extracted properly.



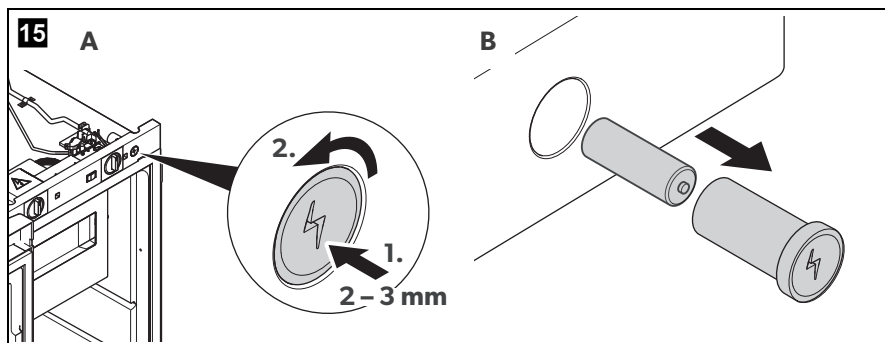
### NOTE

- Cold air can affect the performance of the cooling unit. Assemble the winter covers if you detect a drop in cooling capacity at low outside temperatures. They will protect the cooling unit from air that is too cold and could otherwise affect the performance of the cooling unit.
- Assemble the winter covers if the vehicle is going to be cleaned from the outside or decommissioned for a longer period of time.

Proceed as follows (fig. 14):

1. Check regularly that the ventilation grilles (1) and exhaust gas routing (2) are free from leaves, snow etc.
2. Mount the winter covers on both ventilation grilles (3).

## 7.12 Replacing the battery on the ignition



Proceed as follows (fig. **15**):

1. Using a screwdriver, press the cap on the battery igniter in two or three mm and turn it 90° to the left (**A**).
2. Remove the cap (**B**).
3. Remove the battery (**B**).
4. Insert the new battery (type AA). Make sure the polarity is correct.
5. Put the cap back on.

## 8 Troubleshooting

Problem	Possible cause	Suggested remedy
With AC operation: The refrigerator does not work.	The fuse in the AC mains is defective.	Replace the fuse.
	The vehicle is not connected to the AC mains.	Connect the vehicle to the AC mains.
	The AC heating element is defective.	Contact the authorized customer service.



<b>Problem</b>	<b>Possible cause</b>	<b>Suggested remedy</b>
With DC operation: The refrigerator does not work.	The fuse in the DC supply is defective.	Replace the fuse.
	The vehicle battery is discharged.	Test the battery and charge it.
	The ignition is not turned on.	Switch on the ignition.
	The DC heating element is defective.	Contact the authorized customer service.
With gas operation: The refrigerator does not work.	The gas cylinder is empty.	Replace the gas cylinder.
	The gas valve is closed.	Twist the valve open.
	Air is in the supply line.	Switch the refrigerator off and on again. Repeat the procedure three or four times if necessary.
The refrigerator does not cool sufficiently.	The ventilation around the cooling unit is not sufficient.	Check that the ventilation grille is not obstructed.
	The evaporator is iced up.	Check whether the refrigerator door is properly closed. Defrost the refrigerator.
	The temperature is set too high.	Set a lower temperature.
	The ambient temperature is too high.	Remove the ventilation grille for a while so that warm air can escape quicker.
	Too much food at once was placed in the refrigerator.	Remove an item.
	Too much warm food at once was placed in the refrigerator.	Remove the warm food and leave it to cool down before putting it in again.
	The refrigerator has not been operating for very long.	Check the temperature again after four or five hours.

## 9 Cleaning and maintenance

**WARNING! Electrocuting hazard**

Always disconnect the refrigerator from the mains before you clean and service it.

**NOTICE! Damage hazard**

- Do not use abrasive cleaning agents or hard objects during cleaning as these can damage the refrigerator.
- Never use hard or sharp tools to remove ice or to free objects frozen onto the device.
- Do not use any mechanical tools or any other tools to speed up the defrosting process.

- Clean the refrigerator regularly and as soon as it becomes dirty with a damp cloth.
- Make sure that no water drips into the seals. This can damage the electronics.
- Wipe the refrigerator dry with a cloth after cleaning.
- Check the condensate drain regularly.  
Clean the condensate drain when necessary. If it is blocked, the condensate collects on the bottom of the refrigerator.
- Make sure that the air vents on the refrigerator are free of any dust and dirt so that heat can be released and the refrigerator is not damaged.

## 10 Maintenance

**WARNING!**

Work on gas and electronic installations may only be performed by a certified specialist.

**NOTE**

Have the refrigerator serviced after the vehicle has been out of commission for a longer period of time. Contact customer service to do so.

- After putting the device into use for the first time, and then at two-year intervals, have the gas installation and the connected exhaust gas guides inspected by an authorized expert for compliance with standard EN 1949.

- ▶ The gas burner must be cleaned to remove soiling when necessary, but at least once a year. If liquefied petroleum gas (tank or refillable cylinders) is used, the maintenance interval is shorter, and maintenance must be performed every three or six months, depending on the degree of soiling. This can be identified from a reduced cooling capacity in gas mode.
- ▶ Keep the documentation proving completed maintenance of your refrigerator.

## 11 Warranty

If the product does not work as it should, please contact your retailer or the manufacturer's branch in your country (see [dometic.com/dealer](http://dometic.com/dealer)).

For repair and warranty processing, please include the following documents when you send in the device:

- A copy of the receipt with purchasing date
- A reason for the claim or description of the fault

### **Australia only**

Our goods come with guarantees that cannot be excluded under the Australian Consumer Law. You are entitled to a replacement or refund for a major failure and for compensation for any other reasonably foreseeable loss or damage. You are also entitled to have the goods repaired or replaced if the goods fail to be of acceptable quality and the failure does not amount to a major failure.

### **New Zealand only**

This warranty policy is subject to the conditions and guarantees which are mandatory as implied by the Consumer Guarantees Act 1993(NZ).

## 12 Disposal



### **WARNING! Risk of child entrapment**

Before disposing of your old refrigerator:

- Dismantle the drawers.
- Leave the shelves in the refrigerator so that children cannot climb inside.

- Place the packaging material in the appropriate recycling waste bins, wherever possible.




If you wish to finally dispose of the product, ask your local recycling center or specialist dealer for details about how to do this in accordance with the applicable disposal regulations.



### **Protect the environment!**

Do not dispose of any batteries with general household waste. Return defective or used batteries to your retailer or dispose of them at collection points.

## 13 Technical data

	<b>RM5310</b>	<b>RM5330</b>	<b>RM5380</b>
Voltage:	230 V~ 12 V---		
Gross capacity:	60 l	70 l	80 l
Net capacity:	55 l	65 l	75 l
Freezer compartment:	5 l		
Connection values:	125 W (230 V~) 120 W (12 V---) 18.3 g/h (gas)		
Power consumption:	2,5 kWh/24 h (230 V~) 240 Ah/24 h (12 V---)		
Gas consumption:	270 g/24 h		
Climatic class:	SN		
Ambient temperature:	+10 °C to +32 °C		
Ignition:	Manual		
Power choice:	Manual		
Dimensions h x w x d:	618 x 486 x 474 mm	821 x 486 x 474 mm	821 x 486 x 474 mm
Weight:	20 kg	22 kg	24 kg
Inspection/ certification:			







---

**dometic.com**

---

**YOUR LOCAL  
DEALER**

**[dometic.com/dealer](https://dometic.com/dealer)**

**YOUR LOCAL  
SUPPORT**

**[dometic.com/contact](https://dometic.com/contact)**

**YOUR LOCAL  
SALES OFFICE**

**[dometic.com/sales-offices](https://dometic.com/sales-offices)**

---